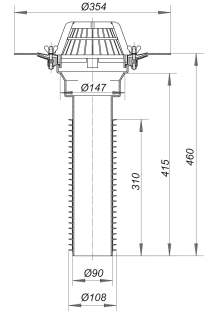


renova roof drain type 63 T clamp ring, 460 mm, DN 100

Part number: 630063
 GTIN: 4001636630063
 Rebate group: 10



Description:

renova roof drain type 63 T clamp ring, 460 mm, DN 100
 conforming to DIN EN 1253

installed by pushing into the bore of pipe, usually without removing the existing roof drain, with stainless steel clamp ring to secure all single-ply membranes

specification:

- multi ribbed seal
- domed grating
- temporary blanking plate

material:

polypropylene, UV-stabilized
 rubber co-moulding

DN 70 fits B.S. 68 mm, 82 mm version available

Flow rates tested to DIN EN 1253:

Nominal diameter	Min. flow rate according to norm	Water level according to norm	Flow rate at water level 5 mm	Flow rate at water level 15 mm	Flow rate at water level 25 mm	Flow rate at water level 35 mm	Flow rate at water level 45 mm	Flow rate at water level 55 mm	Flow rate at water level 65 mm	Flow rate at water level 75 mm
DN 100	4.50 l/s	35.00 mm	0.90 l/s	3.90 l/s	6.90 l/s	9.60 l/s	12.50 l/s	15.50 l/s	17.50 l/s	22.30 l/s

Spare parts:

620866 domed grating/gravel guard type 63 T, d